



**WOOD Inspection Services, Inc.**  
Stanley P. Wood, Sr. - Owner  
(972) 724-5550  
(972) 355-1592 FAX

# StructureScan Optical<sup>®</sup>

by GSSI

Nondestructive  
Concrete  
Inspection  
System

[www.WeInspectTexas.com](http://www.WeInspectTexas.com)

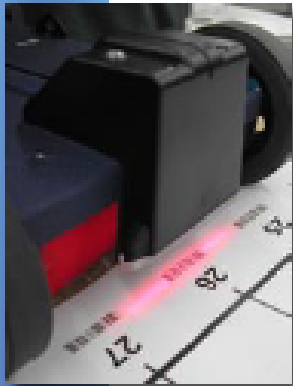


\*Patent Pending

Geophysical Survey Systems, Inc.

[www.StructureScan.com](http://www.StructureScan.com)

# Know what's in the concrete before you cut.



Geophysical Survey Systems, Inc. (GSSI), the world leader in Ground Penetrating Radar, introduces the newest member of its StructureScan product line.

StructureScan Optical revolutionizes 3D data collection by simplifying the data collection process and producing the industry's most accurate data.

## What Makes StructureScan Optical the Best?

- New data collection pads with optical barcodes that work in conjunction with optical encoder to provide accurate, reliable data
- New data collection pad sizes for maximum flexibility on job sites - 1'x1', 2'x2', 2'x4'
- New optical software for simple planview data interpretation on a high-resolution color monitor

## Features found only with the StructureScan product line:

- This 1.6 GHz, high-resolution antenna gives you the ability to resolve smaller targets in concrete
- The only concrete imaging system approved for wall and ceiling use by the FCC
- StructureScan system allows the flexibility of using GSSI's full line of antennas (1.6 GHz, 900 MHz, 400 MHz, 200 MHz, 100 MHz)
- Full suite of application-specific software

## StructureScan Optical

### Simple to Use - Setup to Results in Minutes



**1**  
Set Optical mat  
on concrete surface



**2**  
Collect data with  
the Optical antenna



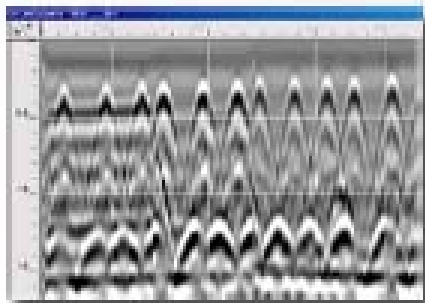
**3**  
View and interpret  
data results

Just 5 minutes from start to finish for a 2' x 2' area

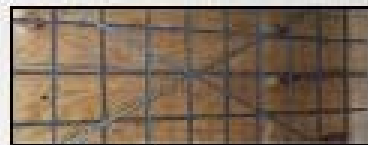
# Call Today - 972 724-5550

## The Difference is the Data

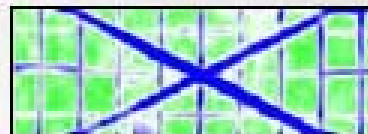
The Most  
Accurate Data  
in the  
Industry Today



Linescan data image showing  
double rebar mat

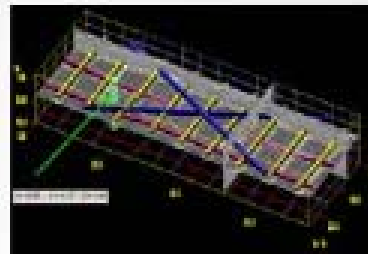
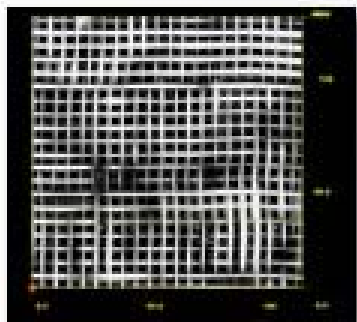


Before concrete pour



StructureScan C-scan data image

3D data of large  
area (10' x 10')  
slab on grade, wire  
mesh at 6" spacing



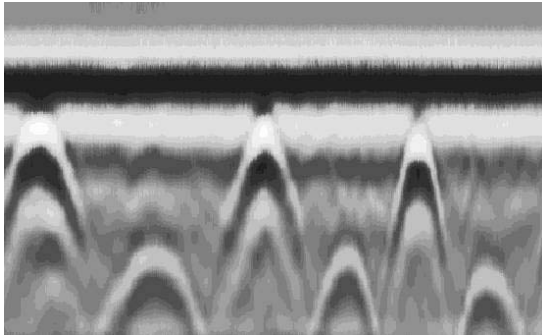
InterActive 3D data interpretation

[www.WeInspectTexas.com](http://www.WeInspectTexas.com)

All Rights Reserved - US Trademark ©  
© Copyright 2001 - 2006 - WOOD Inspection Services, Inc.

# Ground Penetrating Radar GPR Services / 2D or 3D

Know what's in the concrete before you cut!  
Scan and Mark targets in advance of cutting/digging!



## Real time 2D location of:

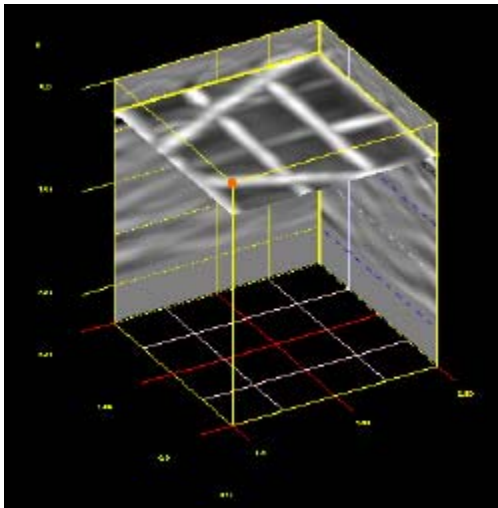
- Steel Beams
- Conduits (Metal or PVC)
- Post-Tension Cables
- Rebar
- Voids
- Unknown Utilities or Objects
- Under Concrete Tanks

**Determine depth of the concrete and depth of target**

**Nondestructive Testing**

**No need to clear the area!**

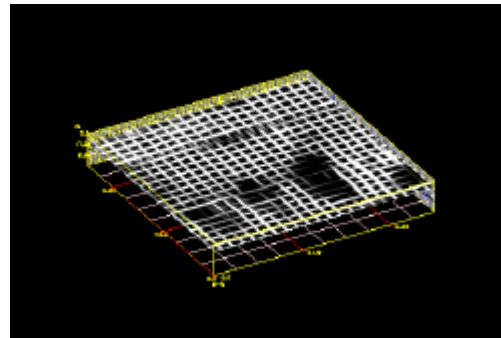
**A solid / safe alternative to X-Ray!**



## 3D Imaging for:

- Mapping Area
- Project Planning
- Customer Presentations (Pretty Pictures)

## Find Wire Mesh



**Call Today - 972 724-5550**

**WOOD Inspection Services, Inc.**  
Stanley P. Wood, Sr. - Owner  
(972) 355-1592 FAX  
[www.WeInspectTexas.com](http://www.WeInspectTexas.com)  
[Sales@WeInspectTexas.com](mailto:Sales@WeInspectTexas.com)