

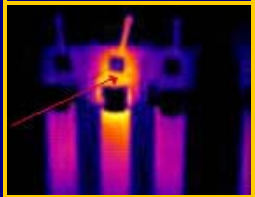


Electrical & Mechanical Infrared Survey

Thermogam Images



Overloaded Wire



Poor Power Connection



Loose Circuit Breaker Connection



Phase Breaker Connection

For Preventive Maintenance

"Our Pictures are Worth a Thousand Words!"

Nearly everything that uses or transmits power gets hot before it fails. Cost effective power management is critical to maintaining the reliability of your electrical and mechanical systems. Infrared thermography is the most effective and efficient technique for surveying electrical and mechanical equipment for components that have deteriorated and become defective. Locating the source of the problem prior to the component's failure becomes invaluable as you save time, labor, and replacement costs.

Excessive heat generation by a component begins as soon as the part begins to deteriorate. Utilizing the latest in Infrared Thermography Technology, this temperature rise is easily detected and potential problems located, preventing dangerous hazards and costly breakdowns.

Applications:	Conditions Detected:	Potential Problems:
Capacitors, Conductors, Lightning Arrestors, Circuit Breakers, Splices, Power Distribution, Disconnects.	Corroded/loose/improper connections and splices, inoperative capacitors, damaged lightning arrestors, corroded breaker connections, overheating, overloading, conductor strands damage.	Overheating, arcing, fire, conductor, strands broken-overhead line could come down. Inoperative capacitor causing lack of protection from power surges and possibly electrical equipment. Potential cost impact: \$1,000 - \$100,000. Defective lightning arrestors leaking power to ground. Potential cost: \$5,000 + Safety considerations.
Miscellaneous Electrical Apparatus	Corroded or loose connections, Unbalanced loads, poor contacts.	Fire, arcing, short-circuiting.

Contact us today for more information!

Wood Inspection Services, Inc.
165 Highview Dr.
Double Oak, TX 75077
(972) 724-5550
www.WeInspectTexas.com